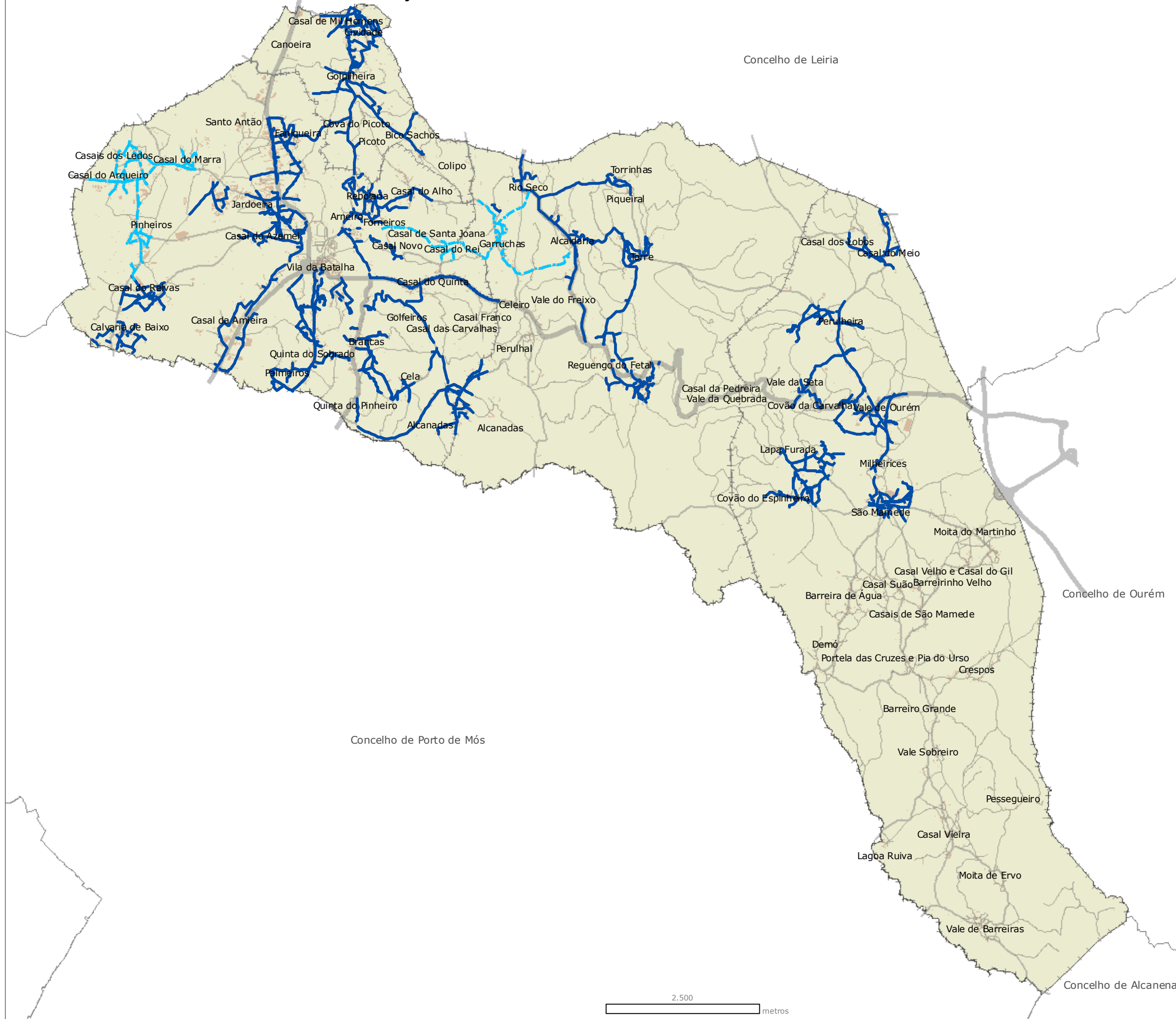









# LOCALIZAÇÃO DA REDE DE SANEAMENTO EM BAIXA NO CONCELHO DA BATALHA



## Legenda

-  Rede Viária Principal
-  Rede Viária Secundária
-  Rede Viária Local
-  Limites administrativos
-  Edifícios
-  Rede de saneamento prevista
-  Rede de saneamento em baixa

MUNICÍPIO DA BATALHA  
 DIVISÃO DE ORDENAMENTO DO TERRITÓRIO  
 SERVIÇO TÉCNICO DE PLANEAMENTO E SIG



**BATALHA**  
 CAMIÃO MUNICIPAL

Fonte: Base cartográfica Ortofotomapas à escala 1/10000, cobertura CMB, limites administrativos do IGP, versão 8.0  
 Novembro 2009

2.500

metros